



196 Bronte Road Waverley NSW

4  3  2 

Designed across three levels, this well-planned home offers strong natural light and distinct living and accommodation zones. Positioned within walking distance to Queens Park, local schools, beaches and village shops.

Type : House
Price : \$2500 per week
View : <https://www.murrayproperty.com.au/8684612>

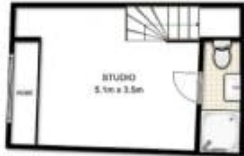
Property Features

- Tri-level layout with well-defined living and accommodation zones
- Sunlit open plan living and dining flowing to internal atrium
- Polished timber flooring throughout living areas and bedrooms
- Four well-proportioned bedrooms, three with built-in wardrobes
- Main bedroom with ensuite including bathtub and separate



Michael Murray
02 9371 5901

[For full version visit the website](https://www.murrayproperty.com.au)



196 Bronte Road, Waverley

Floorplan shown is for presentation purposes and is not part of any legal document or title. All measurements and figures are approximate. Interested parties should make their own enquiries.