






**58/450 Elizabeth Street Surry Hills NSW**

3  3  1 

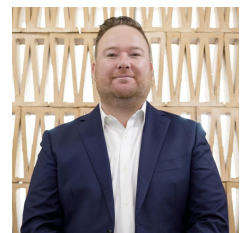
Positioned high above Elizabeth Street, this fully furnished dual-level penthouse offers 186sqm of indoor and outdoor living with excellent natural light, privacy and elevated city views. A north-facing aspect brings in winter sun, while two expansive terraces capture wide skyline outlooks.

**Type** : Apartment  
**Price** : \$1600 per week  
**View** : <https://www.murrayproperty.com.au/8687340>

The layout provides clear separation between living and accommodation, with an upper-level retreat featuring its own ensuite and large outdoor terrace. Residents also have access to on-site pool, spa and sauna facilities for added comfort during the cooler months.



**Michael Murray**  
02 9371 5901

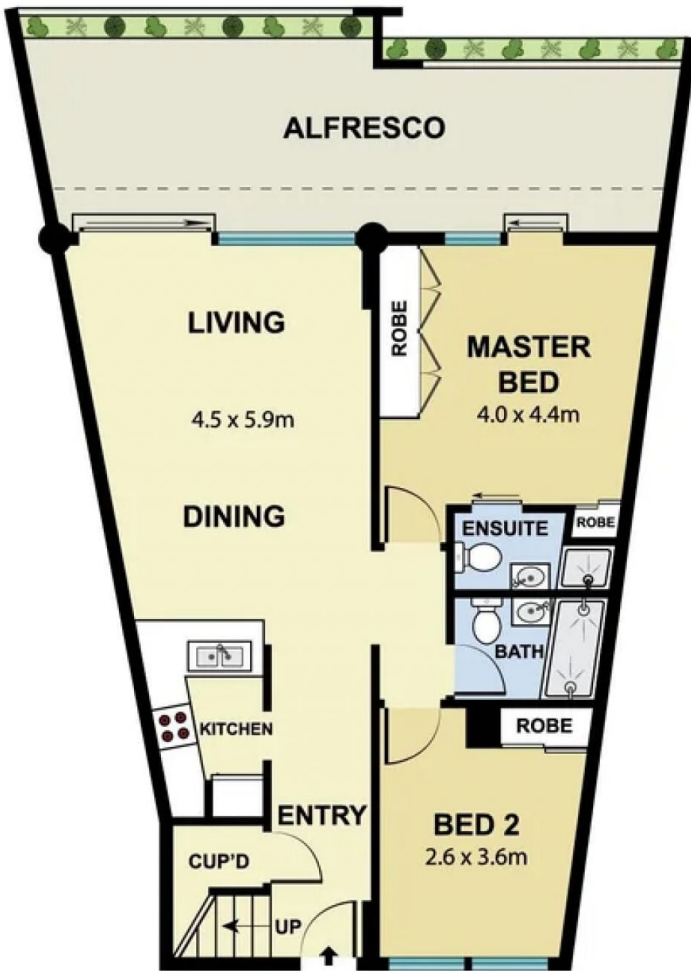


**Nicholas Murray**  
02 9371 5901

**Property Features**

Available from May 28, 2026 to September 24, 2026

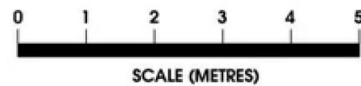
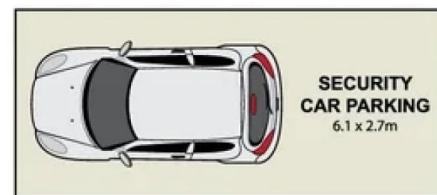
[For full version visit the website](https://www.murrayproperty.com.au)



Level Six



Upper Level



58/450 Elizabeth Street, Surry Hills

Scale in metres. Indicative only. Dimensions are approximate. All information contained here in is gathered from sources we believe to be reliable. However we cannot guarantee its accuracy and interested persons should rely on their own enquiries.